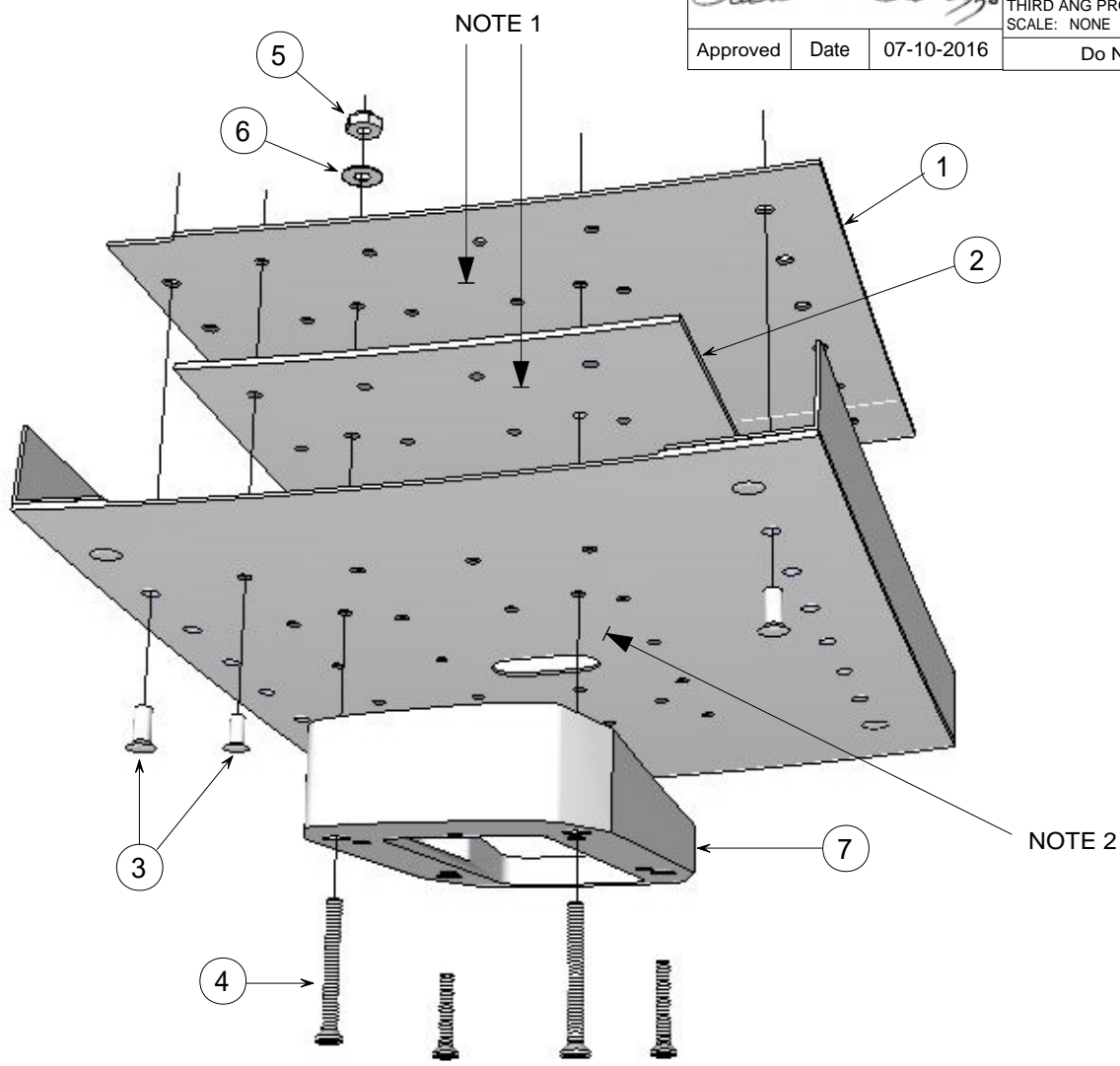


*Richard A. Randazzo*  
 Approved Date 07-10-2016

DWG No: T6-S76-L1-04  
 THIRD ANG PROJ:  
 SCALE: NONE  
 Do Not Scale Drawing

| REVISIONS |                 |     |            |
|-----------|-----------------|-----|------------|
| REV       | DESCRIPTION     | APR | DATE       |
| A         | INITIAL RELEASE | RAR | 07-10-2016 |
|           |                 |     |            |



- NOTES:
- 1- USE CS3204B 1/2 SEALANT OR EQUIVELANT BETWEEN SKIN, SHIM AND DOUBLER THEN RIVIT WET.
  - 2- REMOVE ALL PAINT BETWEEN SKIN AND EXTENSION PLATE CONTACT SURFACES.

# SIKORSKY S76A, S76B, S76C

## INSTALLATION DRAWING

PROPRIETARY NOTICE: THE INFORMATION CONTAINED IN THIS DRAWING IS THE SOLE PROPERTY OF TrueView EVS LLC AND IS NOT TO BE USED, REPRODUCED OR DISCLOSED IN WHOLE OR IN PART TO ANYONE WITHOUT THE WRITTEN PERMISSION OF TrueView EVS LLC

| ITEM | DESCRIPTION      | TV P/N            | MANUF.P/N  | QTY |
|------|------------------|-------------------|------------|-----|
| 7    | EXTENSION PLT    | TV-210-05A/S76-L1 | ---        | 1   |
| 6    | WASHER           | ---               | AN960-6    | 4   |
| 5    | NUT              | ---               | MS21044N06 | 4   |
| 4    | FH SCREW         | ---               | MS24639S36 | 4   |
| 3    | RIVIT            | ---               | NAS1097AD4 | 31  |
| 2    | SHIM             | T6-S76-L1-01      | ---        | 1   |
| 1    | INTERNAL DOUBLER | T6-S76-L1-02      | ---        | 1   |

UNLESS OTHERWISE SPECIFIED  
 All demensions are in inches  
 and tolerances are as follows:

DECIMALS: .XX = +/- .020"  
 .XXX = +/- .010"

① +/- .030"  
 ② +/- .040"  
 ③ +/- .050"

ANGLES: +/- 1.0°

|                                 |  |                             |   |               |
|---------------------------------|--|-----------------------------|---|---------------|
| MATERIAL:<br>NOT SPECIFIED      | APPROVAL   | DATE                        | <b>TrueView EVS</b><br>www.trueviewevs.com<br>Sackets Harbor N.Y. |               |
|                                 | DFT: R. RANDAZZO                                     | 07-10-2016                  |   |               |
| FINISH:<br>NOT SPECIFIED        | CHK:   | TITLE                       | <b>T6-S76-INSTALL</b>   |               |
|                                 | ENG:   | PART No: SEE MATERIAL BLOCK |   |               |
| CAD FILE:<br>T6-200_S76_MOUNT   | APR:   | DWG No.                     | REV A SIZE A  |               |
|                                 | CAD CHANGES SHALL BE INCORPORATED BY DESIGN ACTIVITY | <b>T6-S76-L1-04</b>         |   |               |
| MFG PART No. SEE MATERIAL BLOCK | SCALE: NONE  | WT: N/A                     | PROJ:   | SHEET: 1 OF 3 |