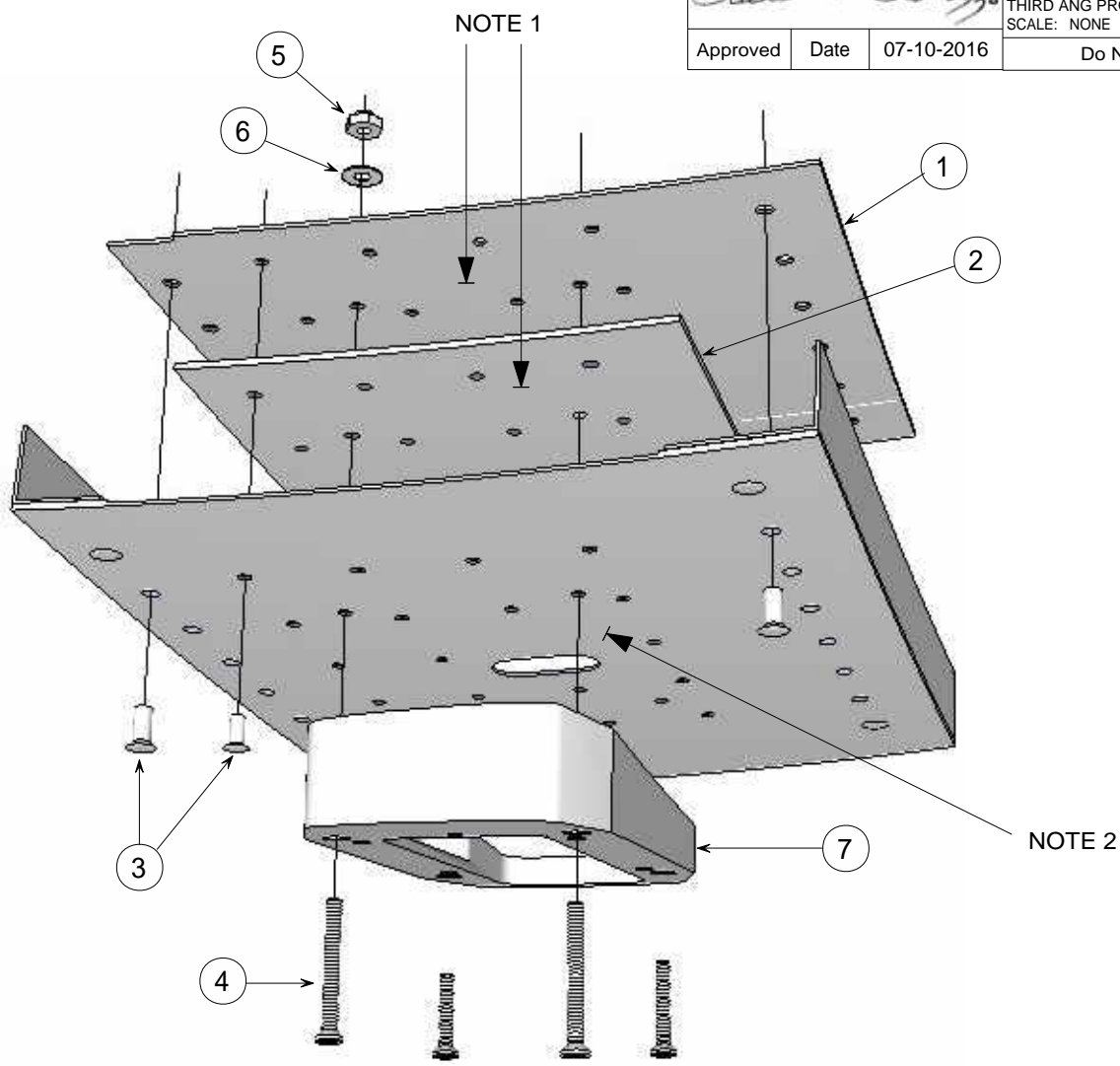


Paul A. ...
 Approved Date 07-10-2016

DWG No: T6-S76-L1-04
 THIRD ANG PROJ:
 SCALE: NONE
 Do Not Scale Drawing

REVISIONS			
REV	DESCRIPTION	APR	DATE
A	INITIAL RELEASE	RAR	07-10-2016



- NOTES:
- 1- USE CS3204B 1/2 SEALANT OR EQUIVELANT BETWEEN SKIN, SHIM AND DOUBLER THEN RIVIT WET.
 - 2- REMOVE ALL PAINT BETWEEN SKIN AND EXTENSION PLATE CONTACT SURFACES.

SIKORSKY S76A, S76B, S76C

INSTALLATION DRAWING

PROPRIETARY NOTICE: THE INFORMATION CONTAINED IN THIS DRAWING IS THE SOLE PROPERTY OF TrueView EVS LLC AND IS NOT TO BE USED, REPRODUCED OR DISCLOSED IN WHOLE OR IN PART TO ANYONE WITHOUT THE WRITTEN PERMISSION OF TrueView EVS LLC

ITEM	DESCRIPTION	TV P/N	MANUF.P/N	QTY
7	EXTENSION PLT	TV-210-05A/S76-L1	---	1
6	WASHER	---	AN960-6	4
5	NUT	---	MS21044N06	4
4	FH SCREW	---	MS24639S36	4
3	RIVIT	---	NAS1097AD4	31
2	SHIM	T6-S76-L1-01	---	1
1	INTERNAL DOUBLER	T6-S76-L1-02	---	1

UNLESS OTHERWISE SPECIFIED
 All demensions are in inches
 and tolerances are as follows:

DECIMALS: .XX = +/- .020"
 .XXX = +/- .010"

① +/- .030"
 ② +/- .040"
 ③ +/- .050"

ANGLES: +/- 1.0°

MATERIAL:	APPROVAL	DATE	TrueView EVS		www.trueviewevs.com
NOT SPECIFIED	DFT: R. RANDAZZO	07-10-2016	Sockets Harbor N.Y.		TITLE
FINISH: NOT SPECIFIED	CHK:		T6-S76-INSTALL		
	ENG:		PART No: SEE MATERIAL BLOCK		
	APR:		DWG No. T6-S76-L1-04		
CAD FILE: T6-200_S76_MOUNT	CAD CHANGES SHALL BE INCORPORATED BY DESIGN ACTIVITY		REV A	SIZE A	
MFG PART No. SEE MATERIAL BLOCK	SCALE: NONE	WT: N/A	PROJ:	SHEET: 1 OF 3	